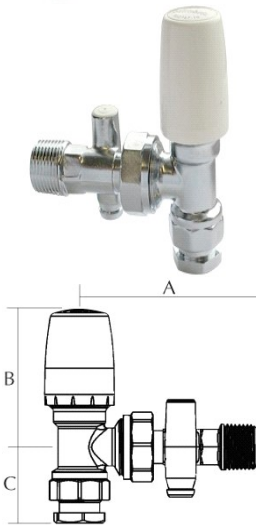


97 DLS Angle Pattern with Drain Off

Lockshield Radiator Valve Angle Pattern with Drain Off for copper or iron

GENERAL INFORMATION

Size	Pattern No.	Box Qty	Code	Barcode	Price (£) ex VAT
15mm / 1/2x1/2	97 CPDLS	1	680009	5013866017971	£34.89



DIMENSIONS (mm)

Code	Description	A	B	C
680009	1/2-15MM 97DLS CP BELMONT ANGLE RAD VALV	81	63	35

PRESSURE & TEMPERATURE

97 DLS Angle Pattern with Drain Off	Minimum Operating Pressure (bar)	Maximum Cold Working Pressure (bar)	Maximum Hot Working Pressure (bar)
1/2-15MM 97DLS BELMONT ANGLE RAD VALVE	No Minimum Operating Pressure	10.0 bar at temperatures up to 120oC	Not Suitable for Maximum Hot Working Pressure

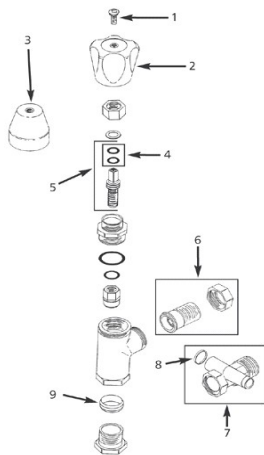
MATERIAL SPECIFICATIONS

Number	Component	Material
1	Body	Forged Brass Chrome Plated
2	Head	Brass Bar
3	Spindle/Valve	Brass Bar
4	Glandnut/Gland	Brass Bar
5	Adapter	Forged Brass Chrome Plated
6	Capnut	Forged Brass Chrome Plated
7	Cone	Brass
8	Set Screw	Brass
9	Lockshield	Polypropylene

SPARES

97 CPDLS - Size - 15mm / 1/2x1/2

Spare Key	Description	Code	Barcode	Date From	Date To	Price (£) ex VAT
1	S4CP CHROME SCREW	840109	5013866058882	April 01 1994	To Current	£0.78
1	S1CP CHROME SCREW	840025	5013866058820	January 01 1990	March 31 1994	£0.78
2	WH9 WHEELHANDLE	843001	5013866034022	April 01 1994	March 31 1994To Current	£3.49
2	WH1 WHEELHANDLE DISCONTINUED	840006	5013866033964	January 01 1990	March 31 1994	£3.49
3	LS22 LOCKSHIELD	843002	5013866034039	April 01 1994	March 31 1994To Current	£3.49
3	WH2 WHEELHANDLE - DISCONTINUED	840007	5013866058813	January 01 1990	March 31 1994	£0.00
4	LS16 LOCKSHIELD - DISCONTINUED	840010	5013866033988	January 01 1990	August 04 2010	£0.00
4	OR3 O RING (RED) DISCONTINUED	840002	5013866033940	April 01 1994	August 04 2010To Current	£1.95
5	OR3 O RING (RED) DISCONTINUED	840002	5013866033940	January 01 1990	March 31 1994	£1.95
5	SOR4 SPINDLE & O RING SET	840113	5013866058929	April 01 1994	March 31 1994To Current	£6.12
5	OR2 O RING (GREEN) DISCONTINUED	840001	5013866033933	January 01 1990	March 31 1994	£1.95
6	TP3CP CHROME TAIL PIPE DISCONTINUED	843008	5013866059186	January 01 1990	March 31 1994	£9.85
6	TP3CP CHROME TAIL PIPE DISCONTINUED	843008	5013866059186	April 01 1994	March 31 1994To Current	£9.85
7	TP6CP CHROME TAIL PIPE	840031	5013866058844	All variations		£12.32
8	DC5 DUST CAP	841102	5013866059063	All variations		£2.31
9	NC1CP NIPPLE & CONE (CHROME)	843013	5013866059230	All variations		£2.91



CARE & MAINTENANCE

Care

No regular aesthetic care is required for this product

Maintenance

No regular maintenance is required for this product.

For any further help please contact the Service Support Team on: 0800 1560050.

REGULATIONS

Regulations

Terrier manual radiator valves are generally approved to BS2767-10. For valves with compression connections, the connections are approved to BS EN1254-2; threaded connections comply with BS 21 or BS 2779.

They are designed for use only in an indirect open-vented or sealed water-filled central heating and/or indirect hot water system and for no other purpose.

They must be used within the pressure and temperature limits stated in the technical information table below.

Operating Conditions	Maximum
System Water Temperature (at 5bar)	120°C
Operating pressure (at 65°C)	10 bar

Under no circumstances must they be used in systems containing liquids or solutions other than water. The only exception is the addition of a proprietary central heating corrosion inhibitor, cleaner or anti-freeze to the system water in accordance with the manufacturer's instructions.

Terrier heating controls are manufactured to a strict quality assurance system in accordance with ISO 9000: 2001

GUARANTEE

Thermostatic and Manual Radiator Valves

Pegler Yorkshire Customcare 5 Year Guarantee - Terms & Conditions

Products are subject to a 5 year guarantee that is between Pegler Yorkshire and the final purchaser of the product.

The guarantee is subject to proof of purchase being supplied.

This guarantee does not affect any statutory rights the consumer may have in law.

The guarantee covers manufacturing or material defects and is not applicable where the product is fitted contrary to conditions of use in our literature.

The guarantee is subject to the following limitations:

1. The valves are designed for use only in an indirect open-vented or sealed water-filled central heating and/or indirect hot water system and for no other purpose.
2. They must be used within the pressure and temperature limits stated in the technical information table below.

Operating Conditions (Maximum)
System Water Temperature (at 5bar) : 120 °C
Operating pressure (at 65 oC) :10 bar

3. Under no circumstances must they be used to in systems containing liquids or solutions other than water. The only exception is the addition of a proprietary central heating corrosion inhibitor, cleaner or anti-freeze to the system water in accordance with the manufacturer's instructions.

4. Damage caused by abusive behaviour and accidental damage to the product are not covered by this guarantee

The extent of Pegler Yorkshire liability is limited to the cost of the replacement of the defective item and not to fitting or consequential damages.

APPROVALS



Kitemarked BS 2767